

# ENRIQUE ANCESTRY REPORT

Yours Simulated G25 Explore Your DNA coordinates are :

enrique\_martinez:enrique\_martinez,0.099026,0.048745,0.053928,0.017442,0.007694,-0.010319,-0.069563,-0.080074,0.01943,0.023326,-0.000974,0.005245,-0.009663,0.001651,0.007329,-0.001193,-0.00352,0.005194,-0.007542,-0.004877,0.000499,-0.00136,0.005053,-0.008435,0.000359

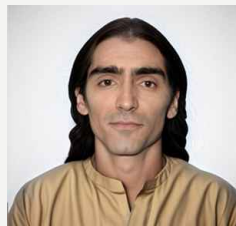
NB : please remember yours reals coordinates are the ones that will provide the most accurate result. To order yours reals coordinates, please use the following link (it is now possible to pay with Paypal). :

<https://g25requests.app/>

**TUR Barcin N:**

The DNA sample referred to as TUR\_Barcin\_N comes from the Barcin Höyük archaeological site in Turkey. This sample is associated with the Neolithic period, dating back to approximately 6500–6200 BCE. It represents the genetic profile of early Anatolian farmers, who played a significant role in the spread of agriculture into Europe.

The genetic makeup of this sample shows a strong connection to the Anatolian Neolithic population, with some links to early European farmers. The Y-DNA haplogroup is often associated with G2a, and the mtDNA haplogroups vary but are typically linked to early farming communities.



**44.09 %**

**BRA LapaDoSanto 9600BP:**

The DNA sample referred to as BRA\_LapaDoSanto\_9600BP originates from the Lapa do Santo archaeological site in Brazil. This sample is dated to approximately 9600 years before present (BP), placing it in the early Holocene period. It represents one of the earliest known human populations in South America.

The genetic analysis of this sample has provided insights into the ancestry of early South American populations, showing connections to ancient Native American groups. It also highlights the diversity and complexity of human migration into the Americas.



**22.10 %**

**Yamnaya RUS Samara:**

The Yamnaya culture, which thrived on the Pontic-Caspian steppe from around 3300 to 2600 BCE, has been extensively studied through ancient DNA analysis. The genetic makeup of the Yamnaya people is particularly significant because it has had a lasting impact on the genetic landscape of Europe and parts of Asia.

Genetic studies have shown that the Yamnaya people were a mix of Eastern European Hunter-Gatherers (EHG) and Caucasus Hunter-Gatherers (CHG) in roughly equal proportions

- This blend is often referred to as 'Steppe ancestry'. The Yamnaya also had some genetic contributions from Anatolian farmers, which they likely acquired through interactions with neighboring populations

- Y-chromosome haplogroups commonly found in Yamnaya individuals include R1b and I2, which are prevalent in modern European populations

- Mitochondrial DNA (mtDNA) haplogroups such as U5, H, and T have also been identified, indicating diverse maternal lineages

- The Yamnaya culture is closely linked to the spread of Indo-European languages and had a significant influence on subsequent cultures, such as the Corded Ware and Bell Beaker cultures

- Their migrations and interactions with other groups played a crucial role in shaping the genetic and cultural landscape of prehistoric Europe.



**21.05 %**

### WHG:

Western Hunter-Gatherers (WHG) were a group of Mesolithic hunter-gatherers who lived in Europe from around 15,000 to 5,000 years ago. Their genetic ancestry is a significant component of modern European populations<sup>1</sup>

.Genetic studies have shown that WHGs had a distinct genetic profile, with Y-chromosome haplogroups such as I2 and mitochondrial DNA (mtDNA) haplogroups like U5 and U41

. These haplogroups are still present in modern European populations, indicating the lasting genetic legacy of WHGs.

WHGs were part of a broader network of hunter-gatherer groups in Europe, including Eastern Hunter-Gatherers (EHG) and Scandinavian Hunter-Gatherers (SHG). The interactions and migrations of these groups contributed to the complex genetic landscape of ancient Europe



**9.04 %**

### MAR Taforalt:

The Taforalt site, also known as Grotte des Pigeons, is located in eastern Morocco and is one of the oldest known cemeteries in North Africa. The site dates back to the Upper Paleolithic period, around 15,100 to 14,000 years ago

.Ancient DNA analysis from Taforalt has provided significant insights into the genetic makeup of the Iberomaurusian culture. The DNA of individuals from Taforalt shows a mix of Eurasian and North African ancestries. Specifically, mitochondrial DNA (mtDNA) haplogroups identified include H, U, JT, and V

. These haplogroups are common in both Eurasian and North African populations, indicating a blend of genetic influences.

The Y-chromosome haplogroup E1b1b1a1 has been identified in male individuals from Taforalt

. This haplogroup is prevalent in North Africa and parts of the Near East, further highlighting the genetic diversity and connections of the Iberomaurusian people.

These genetic findings help us understand the complex population dynamics and migrations that occurred in North Africa during the Upper Paleolithic period.



**3.73 %**

All the reports below are based on Euclidian distance, please use the legend below to evaluate if your genetic distance is good. Remember that most ethnic reports are based on "genetic similarity" and not "direct ancestry".



Your modern break down is :

How to interpret ? This report is trying to break your ancestry using modern references, if you are mixed, you may see your different ancestries appearing on this report, else it may show something more ancient.

|                        |                      |
|------------------------|----------------------|
| Fit :                  | 0.010580980811810671 |
| Spanish_Pais_Vasco :   | 25.91 %              |
| Moroccan_Jew :         | 17.58 %              |
| Basque_Lower_Navarre : | 13.08 %              |
| Karitiana :            | 10.22 %              |
| Aymara :               | 8.85 %               |
| Basque_Roncal :        | 8.29 %               |
| Lithuanian_VZ :        | 5.37 %               |
| Sardinian :            | 5.00 %               |
| Berber_Tunisia_Chen :  | 2.62 %               |
| Surui :                | 2.40 %               |

#### Your modern Breakdown Interpretation (by OpenAI) :

Your Y-DNA haplogroup **R-A432** is a subclade of **R1b**, which is the most common paternal lineage in Western Europe, particularly among populations of the Iberian Peninsula, including Spain and Portugal. This suggests a strong European paternal ancestry, likely from Spain.



Now, let's break down your autosomal DNA results:

**### European Ancestry (~58.65%) - Spanish\_Pais\_Vasco (25.91%) - Basque\_Lower\_Navarre (13.08%) - Basque\_Roncal (8.29%) - Lithuanian\_VZ (5.37%) - Sardinian (5.00%)**

The high percentage of **Basque (Spanish & French)** ancestry suggests a strong connection to the Basque Country, which aligns with your Y-DNA haplogroup, as R1b is very common among Basques. The **Lithuanian** and **Sardinian** components might reflect older European genetic influences, possibly linked to ancient migrations.

**### Jewish & North African Ancestry (~20.20%) - Moroccan\_Jew (17.58%) - Berber\_Tunisia\_Chen (2.62%)**

Your **Moroccan Jewish** and **Berber** ancestry indicate a historical connection to North Africa. This could be due to Sephardic Jewish migration from Spain (many Jews settled in Morocco after the Spanish Inquisition) or earlier Moorish influence in Spain.

**### Indigenous South American Ancestry (~21.47%) - Karitiana (10.22%) - Aymara (8.85%) - Surui (2.40%)**

Your **Indigenous American** ancestry is significant, particularly from **Aymara** (Andean region) and **Karitiana & Surui** (Amazonian groups from Brazil). This indicates strong Native American roots, which is common in Chilean and broader Latin American populations.

**### Interpretation** - Your ancestry is predominantly **European (Basque/Iberian)**, with a notable **Jewish/North African** component. - You also have **significant Indigenous South American** ancestry, which reflects the mixed heritage common in Latin America, especially in Chile. - The combination of **Basque, Sephardic Jewish, and**

**Indigenous ancestry** suggests a history of Spanish colonization, Jewish diaspora movements, and Indigenous ancestry from South America.

Would you like a more detailed historical context based on your results?

Your ancient break down is :

How to interpret ? This report is trying to break your ancestry using ancient references.

|                                      |                      |
|--------------------------------------|----------------------|
| Fit :                                | 0.010239039616006905 |
| France*(AD*130-1400) :               | 27.38 %              |
| South*Amerindian*(9000*BC-AD*1500) : | 22.37 %              |
| Iberian*(700-50*BC) :                | 16.87 %              |
| Roman*Italy*(20*BC-AD*600) :         | 6.68 %               |
| European*Jew*(AD*1160-1400) :        | 5.39 %               |
| Iberian*(AD*300-1200) :              | 4.07 %               |
| Roman*Iberia*(AD*260-500) :          | 4.07 %               |
| Italic*and*Etruscan*(900-200*BC) :   | 2.90 %               |
| North*African*(AD*580-1160) :        | 2.68 %               |
| Roman*North*Africa*(AD*120-220) :    | 2.68 %               |
| Armenian*(AD*1030-1300) :            | 1.99 %               |
| Armenia*(BC*100-AD*300) :            | 1.99 %               |

#### Your Ancient Breakdown Interpretation (by OpenAI) :

Your Y-DNA haplogroup **RA432** is a subclade of **R1b**, which is common in Western Europe, particularly in regions like France, Spain, and the British Isles. This suggests a paternal lineage likely of European origin.



### Interpreting Your Modern Breakdown: Your ancestry breakdown consists of various historical populations that contribute to your genetic makeup. Here's an interpretation of your results:

#### 1. European Ancestry (~67%) - **France (27.38%)** – This suggests a strong genetic influence from medieval France (AD 130-1400), possibly from French settlers during the colonial period in Chile or earlier migrations. - **Iberian (16.87%)** – Represents ancient Iberian populations (Spain and Portugal) from 700-50 BC, which aligns with the deep Celtic and pre-Roman ancestry of the region. - **Roman Italy (6.68%)** – Indicates genetic influence from the Roman Empire, which expanded into Iberia and Gaul. - **Iberian (AD 300-1200) (4.07%) & Roman Iberia (AD 260-500) (4.07%)** – These reinforce your strong Spanish-Portuguese roots, likely from colonial settlers. - **Italic and Etruscan (2.90%)** – Suggests deeper Italian ancestry, possibly linked to the Roman period. - **European Jew (5.39%)** – This could be from Sephardic Jewish ancestors who lived in Spain and Portugal before the Inquisition, many of whom migrated to the Americas.

#### 2. Indigenous South American Ancestry (~22%) - **South Amerindian (22.37%)** – This represents indigenous South American ancestry, likely from Mapuche or other native groups in Chile. This is a significant portion of your heritage and reflects the indigenous influence in Latin American populations.

#### 3. North African & Middle Eastern Influence (~7.3%) - **North African (AD 580-1160) (2.68%) & Roman North Africa (AD 120-220) (2.68%)** – Likely comes from the Moorish occupation of Spain (Al-Andalus) or earlier Roman interactions with North Africa. - **Armenian (AD 1030-1300) (1.99%) & Armenia (BC 100-AD 300) (1.99%)** – This could be linked to Sephardic Jewish or Eastern Mediterranean ancestry, possibly from migration during the

Roman or Ottoman periods.

### **Conclusion:** Your ancestry is predominantly **European (67%)**, with a strong **French, Iberian, and Roman influence**, reflecting colonial Spanish roots. You also have a **significant Native South American component (22%)**, which is common in Chile. Additionally, there are traces of **North African, Jewish, and Armenian ancestry (7%)**, likely from historical migrations through Spain and the Mediterranean.

This genetic mix aligns well with the history of Chile, where Spanish colonists mixed with indigenous peoples, and some European and Jewish migrations contributed to the population over time.

Would you like more details on any specific part?

Your 50 closests modern populations are :

How to interpret ? if you obtain a good distance with your first population (e.g bright green), you could very likely be from that ethnicity or a close ethnicity, else you are most probably mixed or your ethnicity is not referenced on Davidski datasheet.

|   |                   |
|---|-------------------|
| Puerto_Rican  | 0.100042623124468 |
| Turkish_North_Thrace  | 0.134999032950335 |
| Turkish_West_Thrace   | 0.136521526530046 |
| Turkish_Rumeli  | 0.136774475418479 |
| Roma_Barcelona  | 0.137656239960272 |
| Roma_Spain_Barcelona  | 0.137656474078144 |
| Turkish_Izmir   | 0.139477702995855 |
| Turkish_Istanbul_(Anatolian_Turk-Mixed_Balkan_Turk_Profile) | 0.139625416712001 |
| Turkish_Northern_Bulgaria                                   | 0.139822904112439 |
| Turkish_Deliorman   | 0.140358986174737 |
| Roma_Serbia   | 0.142899940300897 |
| Turkish_Balkans_(Anatolian_Turk-Mixed_Profile)              | 0.142918802310513 |
| Turkish_Antalya_Yoruk                                       | 0.143919091134568 |
| Tatar_Mishar  | 0.144036205538746 |
| Turkish_Lesbos  | 0.144658676898415 |
| Turkish_Thessaly  | 0.145083733481738 |
| Tatar_Kazan   | 0.146004710293881 |
| Tatar   | 0.146356539813225 |
| Turkish_Sakarya   | 0.146630026764643 |

|   |                   |
|---|-------------------|
| Turkish_Ankara_Manav                        | 0.146712198811142 |
| Sarthe (France)                             | 0.146865490150001 |
| Turkish_Duzce                               | 0.147143815944905 |
| Turkish_Balikesir                           | 0.147323024249436 |
| Turkish_Mugla                               | 0.147340750480077 |
| Turkish_Chitak                              | 0.147426974231312 |
| Turkish_Bolu                                | 0.147598095008983 |
| Spanish_Murcia                              | 0.147766127130002 |
| Turkish_Antalya                             | 0.148151134369602 |
| Turkish_Canakkale_Europe                    | 0.148236366256732 |
| Turkish_Kutahya                             | 0.148304869887169 |
| Turkish_Central_Macedonia                   | 0.148721162260156 |
| Turkish_Aydin                               | 0.14938750451092  |
| Turkish_Eastern_Macedonia                   | 0.149396877227253 |
| Turkish_Kocaeli                             | 0.14945712055302  |
| Ardèche (France)                            | 0.14954707811589  |
| Roma_Madrid                                 | 0.149576437843666 |
| Spanish_Murcia_(Murcian)                    | 0.150073112753834 |
| Turkish_Denizli                             | 0.150099966312455 |
| Turkish_North_Macedonia                     | 0.150138696231185 |
| Saône et Loire (France)                     | 0.150290442134555 |
| Turkish_Eskisehir                           | 0.150316754795196 |
| Spanish_Galicia_(Galician)                  | 0.150401826725443 |
| Hérault (France)                            | 0.15044171957273  |
| Charente Maritime (France)                  | 0.150491547805018 |
| Spanish_Galicia                             | 0.150811104518202 |
| Turkish_Usak                                | 0.150965912024867 |
| French_Occitan_Auvergne-Rhone-Alpes_Ardeche | 0.151062331888582 |
| Afrikaner                                   | 0.151203951800209 |
| Portuguese                                  | 0.151279960569799 |



## Your 50 closests modern 2-Ways are :

The 2Ways compares your coordinates to the ones of all referenced populations within the modern datasheet of Davidski. It measures how closely your admixture percentages are aligned with each population. It's important to understand that 2Ways aren't measuring shared DNA between your kit and referenced samples.

If you are from one ethnicity you should only concentrate on yours closests populations, else if you are mixed (e.g parents from differents ethnicities), yours closests 2Ways should be close to "50% Parent 1 Ethnicity - 50% Parent 2 Ethnicity". if you are more mixed (for example from latina America), your 2Ways is not going to be accurate.

|   |                    |
|---|--------------------|
| 78% Spanish_Andalucia + 22% Aymara              | 0.0146536972815042 |
| 79% Spanish_Andalucia + 21% Karitiana           | 0.0147846049655654 |
| 78% Spanish_Andalucia + 22% Wichi               | 0.0149001523863153 |
| 79% Spanish_Andalucia + 21% Surui               | 0.0149082322246606 |
| 78% Spanish_Andalucia + 22% Yukpa               | 0.0149481419457118 |
| 77% Spanish_Andalucia + 23% Cachi               | 0.0150459646318494 |
| 75% Spanish_Andalucia + 25% Bolivian_Pando      | 0.0152278963839573 |
| 77% Spanish_Andalucia + 23% Colla               | 0.0152762441416269 |
| 79% Portuguese + 21% Surui                      | 0.0154486817910101 |
| 77% Spanish_Andalucia + 23% Bolivian_LaPaz      | 0.015506144771744  |
| 78% Spanish_Andalucia + 22% Piapoco             | 0.015715916520958  |
| 76% Spanish_Andalucia + 24% Quechua             | 0.0157576792473543 |
| 79% Portuguese + 21% Karitiana                  | 0.0159437884931743 |
| 76% Portuguese + 24% Bolivian_Pando             | 0.0161821723804643 |
| 76% Spanish_Andalucia + 24% Bolivian_Cochabamba | 0.0163159848686787 |
| 79% Portuguese + 21% Wichi                      | 0.0163278627878062 |
| 78% Portuguese + 22% Yukpa                      | 0.0163820214615849 |
| 78% Portuguese + 22% Aymara                     | 0.0163958480706885 |
| 77% Portuguese + 23% Cachi                      | 0.0164257356205914 |
| 78% Spanish_Galicia + 22% Yukpa                 | 0.0166693219397985 |
| 77% Spanish_Castilla_La_Mancha + 23% Cachi      | 0.0166720247029771 |
| 78% Portuguese + 22% Bolivian_LaPaz             | 0.0166758907127141 |

|  |                    |
|--|--------------------|
| 76% Portuguese + 24% Bolivian_Cochabamba                 | 0.0167241938487438 |
| 77% Spanish_Andalucia + 23% Mayan                        | 0.0168302062929776 |
| 77% Spanish_Galicia + 23% Cachi                          | 0.0168567655686312 |
| 79% Portuguese + 21% Piapoco                             | 0.0169161086463052 |
| 75% Spanish_Castilla_La_Mancha + 25% Bolivian_Pando      | 0.0169953869710365 |
| 79% Spanish_Galicia + 21% Surui                          | 0.017010767346499  |
| 78% Portuguese + 22% Colla                               | 0.0170116807888692 |
| 78% Spanish_Castilla_La_Mancha + 22% Yukpa               | 0.0170254750975961 |
| 76% Spanish_Galicia + 24% Bolivian_Pando                 | 0.0170400025110938 |
| 78% Spanish_Galicia + 22% Aymara                         | 0.0171377569260938 |
| 76% Spanish_Menorca + 24% Bolivian_Cochabamba            | 0.0172239379799046 |
| 76% Spanish_Castilla_La_Mancha + 24% Bolivian_Cochabamba | 0.0173091492751142 |
| 76% Portuguese + 24% Quechua                             | 0.0173258992178086 |
| 79% Spanish_Galicia + 21% Karitiana                      | 0.0173829425906246 |
| 76% Spanish_Galicia + 24% Bolivian_Cochabamba            | 0.0173878044837072 |
| 77% Spanish_Menorca + 23% Cachi                          | 0.0174814421266198 |
| 78% Spanish_Castilla_La_Mancha + 22% Aymara              | 0.0175012608299449 |
| 79% Spanish_Galicia + 21% Wichi                          | 0.0175145927920153 |
| 79% Spanish_Castilla_La_Mancha + 21% Surui               | 0.0175972099959186 |
| 77% Spanish_Castilla_La_Mancha + 23% Colla               | 0.0176057058662462 |
| 78% Spanish_Galicia + 22% Bolivian_LaPaz                 | 0.0176630592770897 |
| 78% Spanish_Castilla_La_Mancha + 22% Wichi               | 0.0177044911534024 |
| 79% Spanish_Castilla_La_Mancha + 21% Karitiana           | 0.0177314602485701 |
| 76% Spanish_Alacant + 24% Bolivian_Pando                 | 0.0177385328300504 |
| 78% Spanish_Castilla_La_Mancha + 22% Piapoco             | 0.0177420770751552 |
| 79% Spanish_Castilla_Y_Leon + 21% Surui                  | 0.0178016916818458 |
| 76% Spanish_Castilla_La_Mancha + 24% Quechua             | 0.0178106383185577 |
| 79% Spanish_Galicia + 21% Piapoco                        | 0.0178638052655178 |
| 76% Spanish_Galicia + 24% Quechua                        | 0.0178679306082634 |

## Your ancient map :

How to interpret ? This map is trying to break your ancient ancestry and display on a map.



## Your modern similitud map :

How to interpret ? This similitud Map is based on the modern Davidski G25 sheet + the French averages of the Explore Your DNA Project !. It's only going to be accurate for people that belong to ONE ethnicity, else it's going to show midpoints, which are the populations closest to your genetic composition. This map is a snapshot of you similitud with pre colonial period populations, means for example that people from Latin America are going to show ancestry in both Americas & Europe, same for North Americans, Australians & South Africans...Nomadic tribes and diasporas (Ashkenazis, Romas...) are not going to appear on the map so it's also going to show their ancient ancestry (e.g Ashkenazis are going to appear in both the Levant and Europe).

GREAT

GOOD

AVERAGE

DISTANT

VERY DISTANT

